

NDCI Conference

National Rehabilitation Framework

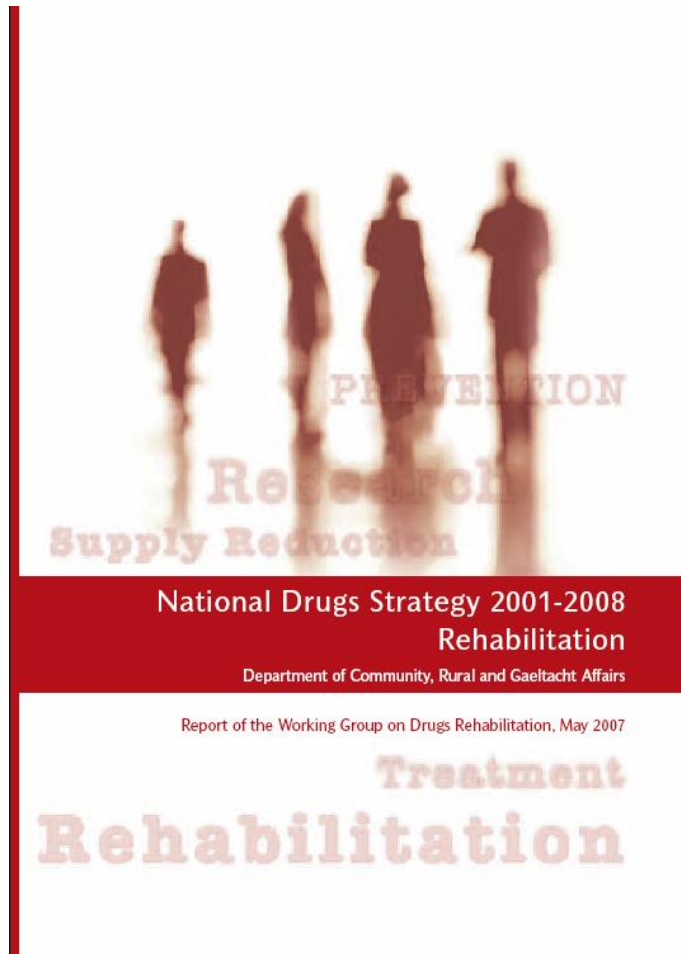
Training 4<sup>th</sup> November 2011



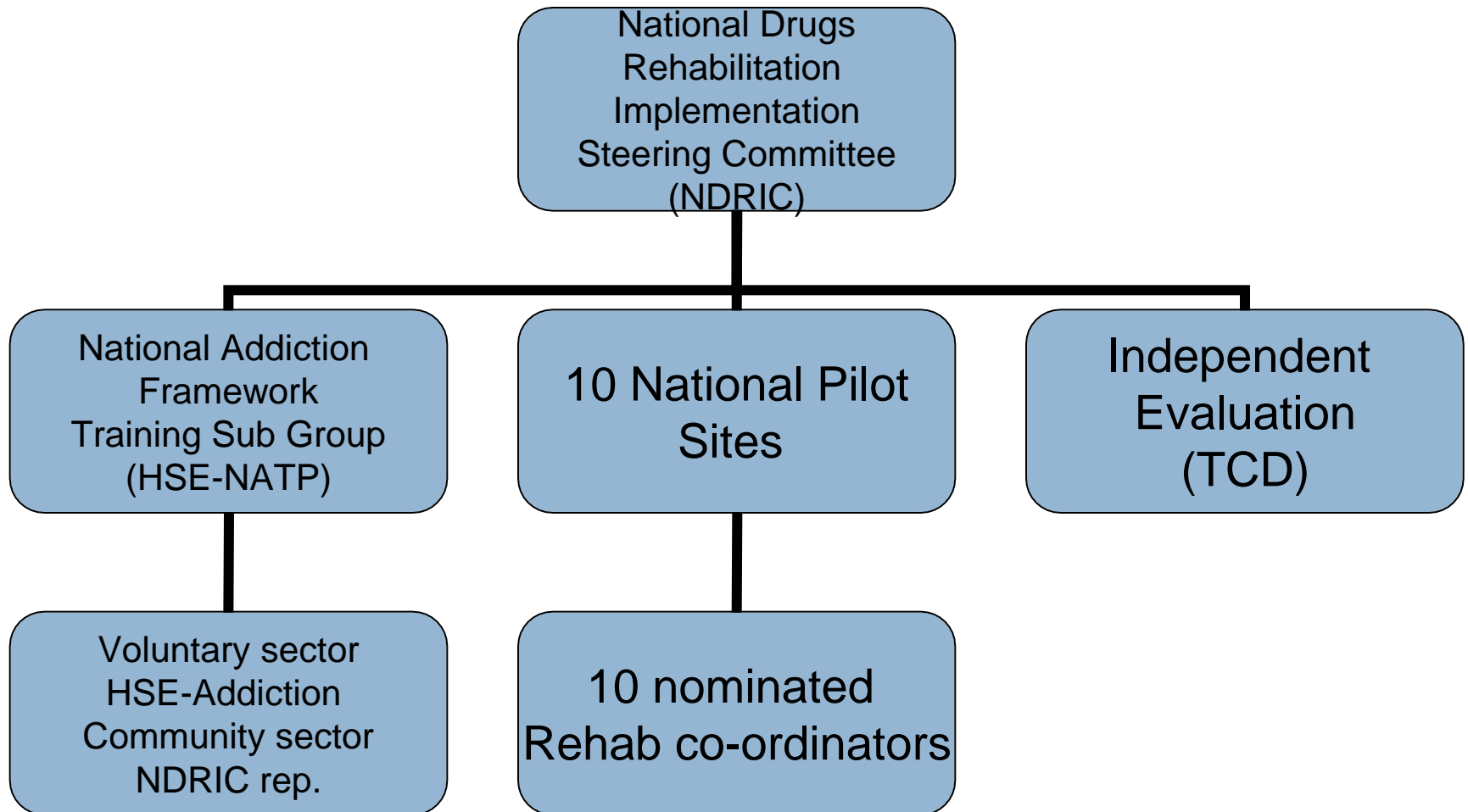
Marion Rackard, IAHIP, IAAAC, Project Manager,  
National Substance Misuse Strategy, HSE

# Context....

- ❑ **National Drugs Rehabilitation Implementation Steering Committee(NDRIC)** has responsibility for overseeing implementation and monitoring of recommendations
- ❑ Developed a National Rehabilitation document 2010



# National Structure



# Pilot Sites:

1. North Eastern Regional Drugs Task Force
2. Dublin NEDTF
3. Dublin Inner City DTF
4. Dun Laoghaire/Rathdown DTF
5. Ballyfermot DTF
6. Canal Communities DTF
7. South East Regional Drugs Task Force
8. Blanchardstown DTF
9. Cork LDTF+ Southern RDTF
10. Midwest Regional Drugs Task Force

# The 2010 National Drugs Rehabilitation Framework document recommends:

- Developing a **quality standard framework** which builds upon existing standards
- Practising+ working **key working, case management** and **care planning** processes
- Developing agreed ways of working=**protocols**
- Developing agreed ways of communication with agencies=**service level agreements**
- Identifying **core competencies** and **training needs** and ensuring that such needs are met

# National Addiction Training Programme(HSE)

- enhance the skills of staff working in frontline practice by expanding knowledge, challenging attitudes and improving practice
- focus on improving the relationship which needs to be built between an individual and their worker-the length, depth and focus of the relationship will vary
- training based on the acknowledgement and recognition of the complexities in helping people with alcohol and drug problems
- rehabilitation may involve a long term perspective involving multiple interventions with multiple organisations working together over time to support a recovery/stabilisation experience.

# KEY Tasks of Sub group:

- In line with the NRRF document, best practice in the following areas was identified:
  1. **Key Working** as the process undertaken by the key worker to ensure the delivery and ongoing review of the care plan.
  2. **Care Planning** as a process for setting goals based on the needs identified through an assessment, and planning interventions to meet those goals with the service user. Care Planning is a core requirement of structured drug treatment.
  3. **Case Management** as the process of co-ordinating the care of a service user through a shared care plan and resolving any blocks and gaps as they arise.

# Module Descriptors:

- **Aim of module**
- **Learning outcomes**
- **Course content**
- **Skills content**
- **Teaching and learning strategy**
- **Assessment**
- **Course evaluation**
- **Essential pre course reading and other relevant reading**
- **NDRF definitions**

# Introductory Meetings:

- Make contact with managers and staff of local pilots
- Highlight some results from on line survey
- NDRF document- core components
- Highlight key areas of training mentioned in the report
- Present training plan
- Enquire about other training needs

# Tender Specification:

- 1 Training Agency to ensure national standardisation
- Adherence to 3 module descriptors + adaptation work closely with nominated rehab coordinator to set training priorities and contextualise details of training
- training to be based on scenarios from trainees experience of involvement in local pilot
- Pre and post training self assessment
- The National Drugs Rehabilitation Framework 2010 key organisational standards to be promoted within the training.

# Training spec contd....

- Training modules and topics are required to provide the best evidence and guidelines for best practice within each module
- 6 days of training per pilot site= 60 days
- 2 days per module
- 1 pilot training site prior to Christmas
- 9 remaining sites= 54 days to be completed  
Spring 2012

# Learning Curve Institute

- Successful tender due to adherence to specifications
- Provision of evidence and guidelines for best practice within each module
- Availability of qualified personnel with clinical experience
- Quality assurance+ standardisation

# Evaluation;

---

- A detailed evaluation tool will be developed that will assess the implementation of the Rehabilitation Framework; structures, process and outcome indicators in relation to service users and providers.

# Future work for NATP....

1. Close monitoring of on going training
2. Training for Managers in supervising staff
3. Training for trainers in 3 key modules
4. Training for Tier 1 +2 services in Brief Intervention
5. To seek accreditation for training
6. Other training needs within available resources

---

Thank you

Marion Rackard  
Mob. 087 4193371

